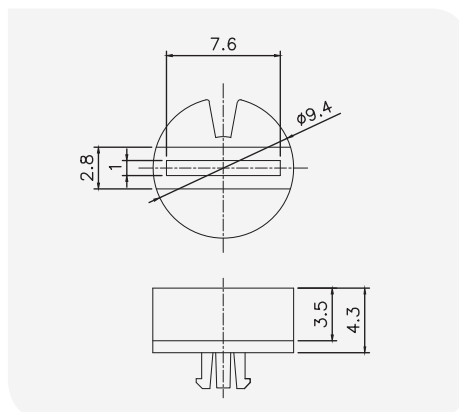
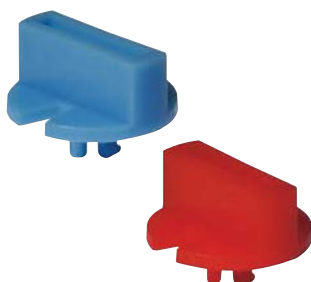


# ROTARY DIP SWITCH ACCESSORY **RK Series**

**\*\* Applicable to only 'E' Type Actuators / Should be mounted after soldering**

## 1 RK-100 Series

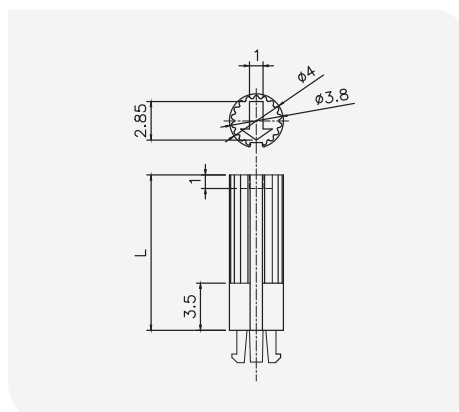


**RK - 100**

### Color

G : Gray  
R : Red  
K : Black  
Y : Yellow  
B : Blue  
GR : Green  
C : Clear

## 2 RK-200 Series



**RK - 20**

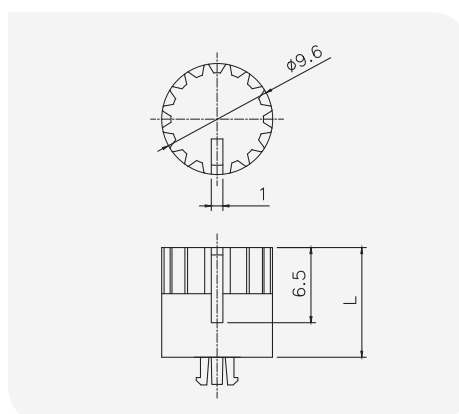
### Color

G : Gray  
R : Red  
K : Black  
Y : Yellow  
B : Blue  
GR : Green  
C : Clear

### L (Length)

0 : 7.3  
1 : 11.6  
2 : 13.3

## 3 RK-300 Series



**RK - 30**

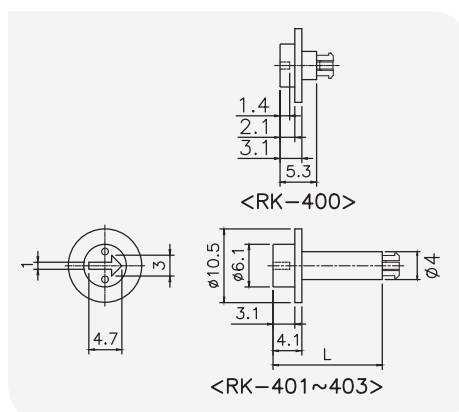
### Color

G : Gray  
R : Red  
K : Black  
Y : Yellow  
B : Blue  
GR : Green  
C : Clear

### L (Length)

0 : 9.5  
1 : 14.5  
2 : 19.0

## 4 RK-400 Series



**RK - 40**

### Color

G : Gray  
R : Red  
K : Black  
Y : Yellow  
B : Blue  
GR : Green  
C : Clear

### L (Length)

0 : 5.3  
1 : 15.7  
2 : 29.1  
3 : 34.4