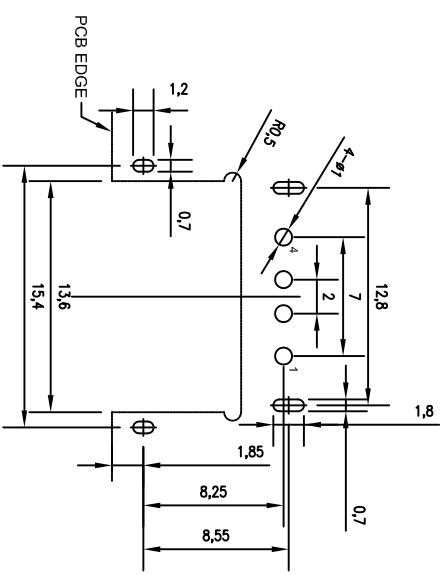
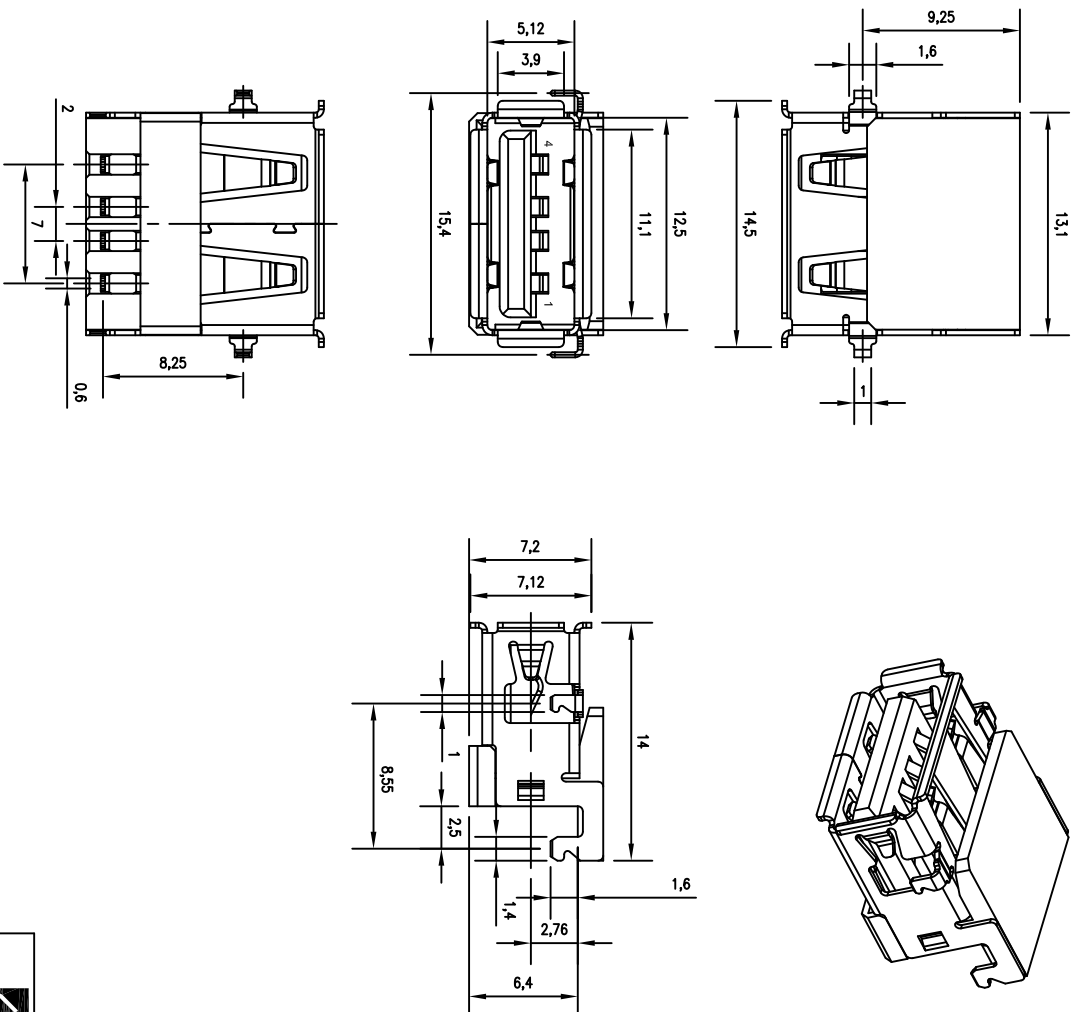


NO.	NAME	MATERIAL	FINISH
1	HOUSING	Nylon / LCP	
2	CONTACT	PHOS. BRONZE	Gold-Tin Plated
3	SHELL	BRASS	Ni Plated



RECOMMENDED PCB LAYOUT  
TOP VIEW

RECOMMENDED PCB THICKNESS: 1.20 ± 0.05mm

### TUA-S10EA \*-\*-\*

- Series \_\_\_\_\_
- Type \_\_\_\_\_
- B: Black \_\_\_\_\_
- Material \_\_\_\_\_
- P : Nylon \_\_\_\_\_
- L : Lcp \_\_\_\_\_
- Shell \_\_\_\_\_
- N : Nickel Plated \_\_\_\_\_
- Version \_\_\_\_\_
- 1 : 1.1 \_\_\_\_\_
- 2 : 2.0 \_\_\_\_\_

**TACLIX** TACLIX ELECTRONICS CO., LTD.

TOLERANCES UNLESS OTHERWISE SPECIFIED		SIGNATURES		TITLE	
LINEAR: ±0.30	ANGULAR: ±3°	DRAWN	Johnson	DATE	2011.5.20
REVISIONS	SCALE	CHK'D	Alex	NO.	2011.5.20
A	5/1	APPV'D	Rex	NO.	TUA-S10EAX-xxx

REV	ZONE	REVISION	DATE	APPD.

NO.	DESCRIPTION	DATE	APPROVED

NO.	DESCRIPTION	DATE	APPROVED

NO.	DESCRIPTION	DATE	APPROVED