

MATERIAL NUMBER TABLE

MATERIAL NUMBER	SHELL	HOUSING
TUC-320106-50GHW	SHELL BEIL LOGO	LCP WHITE
TUC-320106-50GH	SHELL BEIL LOGO	AP10T BLACK

REV.	ECN NO OR DESCRIPTION	REVISED	DATE
A	PROPOSE ONLY	ERIC	2017/03/24

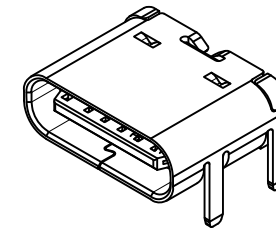
NOTES:

- MATERIAL:
  - Housing:High Temperature Thermoplastic UL94V-0; Color Black.
  - Terminal:Copper Alloy.
  - Shell:Stainless Steel
- SPECIALITY:
  - Rated current:3A
  - Rated voltage:10V
  - Contact Resistance:50m OHMS MAX
  - Insulation Resistance:100M OHMS MIN 100V DC
  - Dielectric withstanding voltage: 100V AC.
  - Solder ability:235±5 °C 5±0.5s.
  - Durability:10000 Cycles Min.
  - Operating condition:Temperature-40°C~ +85°C Humidity 80% R.H MAX
- PLEASE CONTACT KRCONN SALES REPRESENTATIVE TO VERIFY PRODUCT DETAILS & AVAILABILITY

7. PART No.:

TUC -32 01 06- 50 G(H) Upgrade version  
 G=gold flash(shell)  
 50=Product Order  
 Pin NO. 6=6Pin  
 01=NORMAL TYPE.

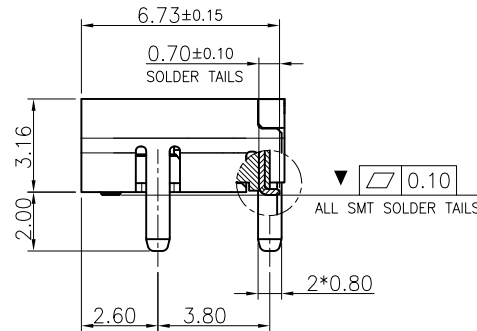
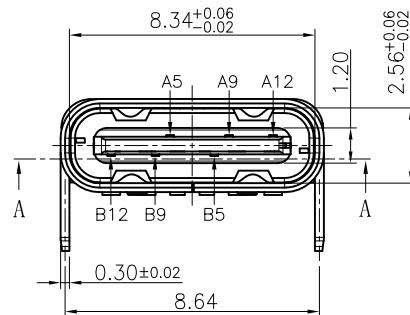
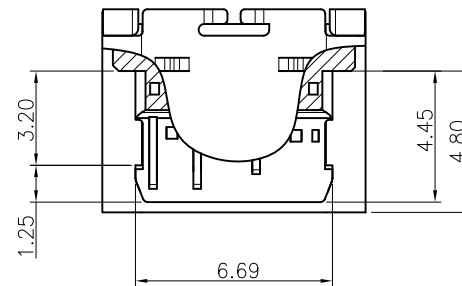
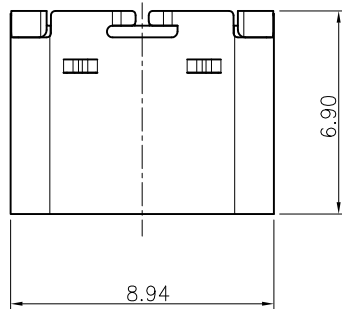
32:HEIGHT 3.2mm



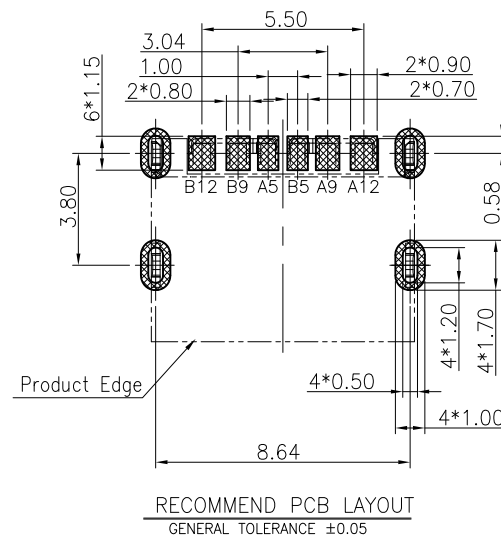
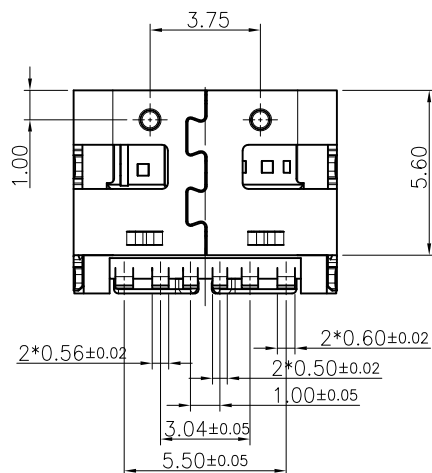
PIN NO.	PIN NAME
A 5	CC1
A 9	V BUS
A 12	GND
B 5	CC2
B 9	V BUS
B 12	GND

NO.	DESCRIPTION	QT'Y	MATERIAL	NOTE
4	SHIELDING PLATE	1	STAINLESS STEEL	N/A
3	TERMINAL	6	COPOER ALLOY	CONTACT Au OVER ALL:
2	SHELL	1	STAILESS STELL	PAD Au OVER ALL:
1	HOUSING	1	THERMOPLASTIC	UL 94V-0

UNLESS OTHERWISE SPECIFED TOLERANCES		<b>TACLEX ELECTRONICS CO., LTD.</b>			
DECIMALS:	ANGLES:	TITLE 6pin TYPE.C CONN.			
X :±0.5	X :±2°	DWN	Johnie	PART NO. SEE TABLE	
X.X :±0.20	X.X :±1°	CHKD	Kevin.d	SCALE:1:1	UNIT: mm
X.XX :±0.10		APVD	Simon.Mo	SIZE: A4	SHEET:10F1
				SHEET:10F1	REV: A
CUSTOMER COPY					



SECTION A-A



RECOMMEND PCB LAYOUT GENERAL TOLERANCE ±0.05