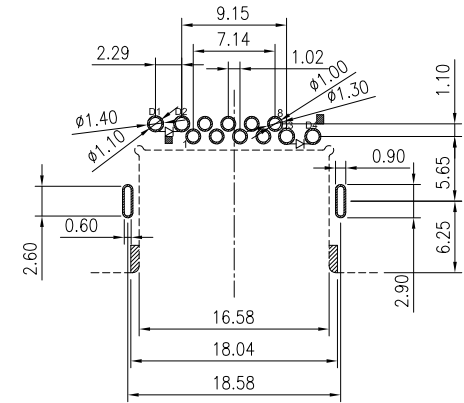
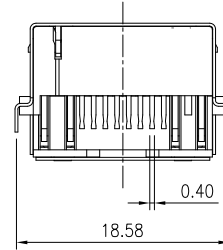
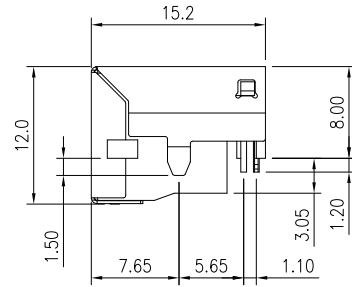
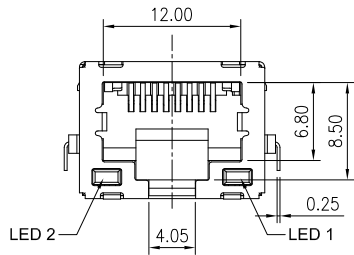
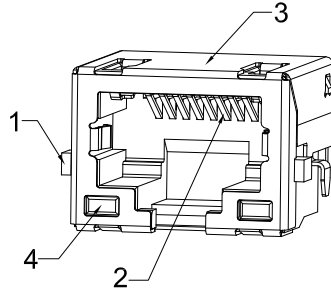
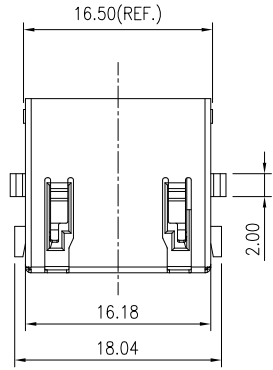


PART NO : HA88KT5-B*1*-TR

Positions ———> ↑ ↑
 Contacts ———> ↑ ↑
 Housing Color ———> ↑ ↑
 Led Options ———> ↑ ↑
 Port ———> ↑ ↑
 Gold Plated
 1 : 6u"
 2 : 15u"
 3 : 30u"
 4 : 50u"
 5 : Gold Flash

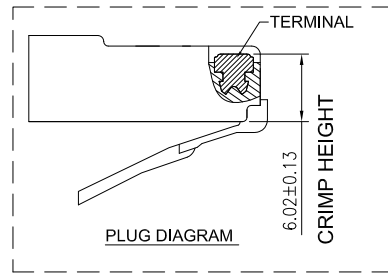
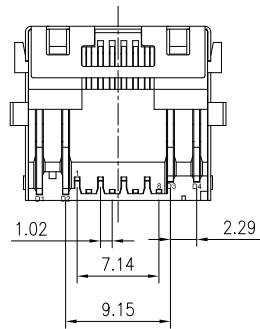


RECOMMENDED PCB LAYOUT

TOP VIEW

TOLERANCE: ±0.05mm

PCB THICKNESS: 1.00±0.05mm



LED Color Options Table

LED Color Options		
LED 2 (Left)	LED 1 (Right)	LED DASH OPTION
Yellow	Green	1
No LED	Green	2
Yellow	No LED	3
Green	Yellow	4
Green	Green	5
Yellow	Yellow	6
Orange/Green	Orange/Green	7
Yellow/Green	Yellow/Green	8
Orange/Green	Yellow	9

NO.	NAME	MATERIAL	FINISH
1	Housing	High-Thermoplastic-LCP	
2	Terminal	Copper Alloy	Contact Area : Gold Plated Solder Area : Matte-Tin Plated
3	Shell	Alloy	Nickel Plated
4	LED		



TACLEX

TACLEX ELECTRONICS CO., LTD.

TOLERANCES UNLESS OTHERWISE SPECIFIED
 LINEAR: ±0.30 ANGULAR: ±3°

SIGNATURES

DATE

TITLE RJ45 , Shielded, Receptacle , Horizontal , Single Port , Tht , With LED

DRAWN **Alex**

2018/01/25

CHK'D **Andy**

2018/01/25

APPV'D **Rex**

2018/01/25

NO. **HA88KT5-B*1*-TR**

REVISIONS

A



SCALE

1/1

SYM	DISCIPTION	DATE	APPROVED
1			
2			
3			