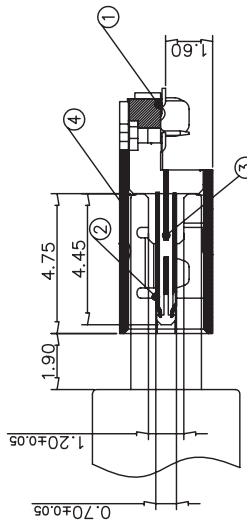
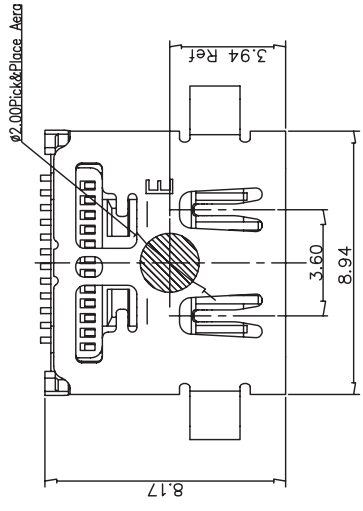




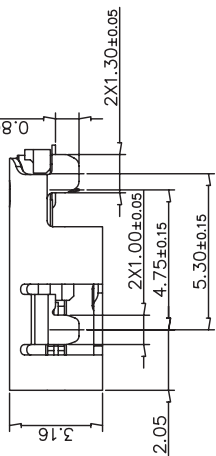
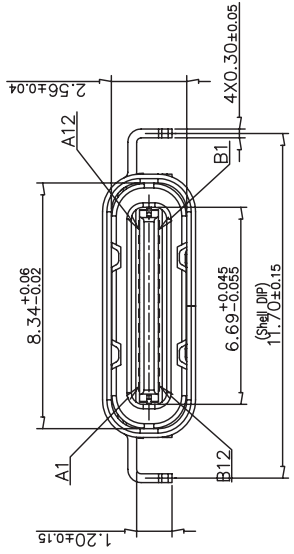
REV. A	ECN NO OR DESCRIPTION	REVISED	DATE
	PROPOSE ONLY	ERIC	2020.05.08

PIN ASSIGNMENTS:

A1	A2	A3	A4	A5	A6	A7	A8	A9	A10	A11	A12
GND	TX1+	TX1-	Vbus	CC1	D+	D-	SBU1	Vbus	RX2-	RX2+	GND
B12	B11	B10	B9	B8	B7	B6	B5	B4	B3	B2	B1
GND	RX1+	RX1-	Vbus	SBU2	D-	D+	CC2	Vbus	TX2-	TX2+	GND



AFTER MATING RECEPTAL SECTION A-A

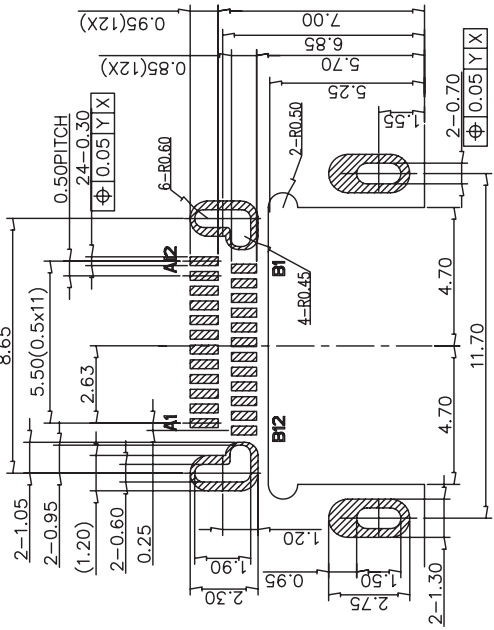


SPECIFICATION:

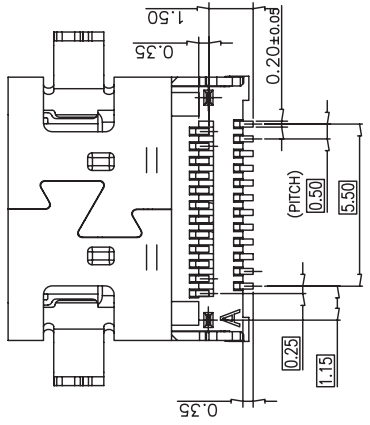
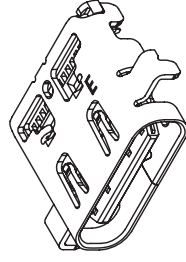
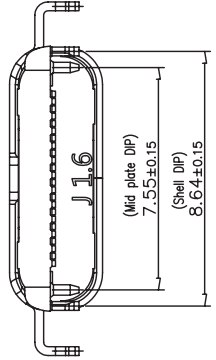
- ELECTRICAL CHARACTERISTICS:
 - CURRENT RATING: 1.5A/ Pin MAX(A4,A9,B4,B9) 1.25A/ Pin MAX(A1,A12,B1,B12) 0.25A(OTHER PIN)
 - CONTACT RESISTANCE: 40 MILLIONHM MAX.
 - DIELECTRIC WITHSTANDING VOLTAGE: 100 VAC r.m.s
 - INSULATION RESISTANCE: 100 MEGOHMS MIN.
 - MECHANICAL CHARACTERISTICS
 - INSERTION FORCE: 5~20N
 - EXTRACTION FORCE: Initial: 8~20N; Durability: 6~20N(1000cycles);
 - DURABILITY: 10,000CYCLES
 - ENVIRONMENTAL CHARACTERISTICS
 - TEMPERATURE RANGE: -40 °C ~ 85 °C
 - IR REFLOW:
- THE PEAK TEMPERATURE ON THE BOARD SHALL BE MAINTAINED FOR 10 SECONDS AT 260°C.

4.PART NO.: **TCR04-16122402-J1**

- TC=TYPE C. CONN.
- R=RECEPTAL
- Product Order
- 16=HEIGHT ON BOARD 1.6mm
- 1=BLACK HOUSING
- 1=WITH OUT POST
- J1= Services NO.
- 02=3u" Au Plating On Contact Area
- Pin No. 24=24Pin



RECOMMENDED P.C.B LAYOUT (COMPONENT SIDE)
PCB THICKNESS: 0.80±0.05mm
DEFAULT TOLERANCE: ±0.05mm



④ SHELL	STAINLESS STEEL	NI Plated	1PCS
③ CENTER PLATE	STAINLESS STEEL	NI Plated	1PCS
② CONTACT	COPPER ALLOY	Au/Ni Plated	2SET
① HOUSING	HIGH TEMPERATURE PLASTIC	BLACK	1PCS
NO.	DESCRIPTION	MATERIAL	QTY

UNLESS OTHERWISE SPECIFIED TOLERANCES		TACLEX ELECTRONICS CO., LTD.	
DECIMALS:	ANGLES:	TITLE	Type.C 24PIN Dull SMT CONN. RECEPTAL
X : ±0.5	X : ±2°	DWN	cherjun PART NO. TCR04-16122402-J1
X.X : ±0.30	X.X : ±1°	CHKD	cherjun SCALE: 1:1 UNIT: mm
X.XX : ±0.20		APVD	Kevin.d SIZE: A4 SHEET: 10F1 REV: A
X.XXX : ±0.10		DRAW NO.	C-DWG-TCR06-01 CUSTOMER COPY

